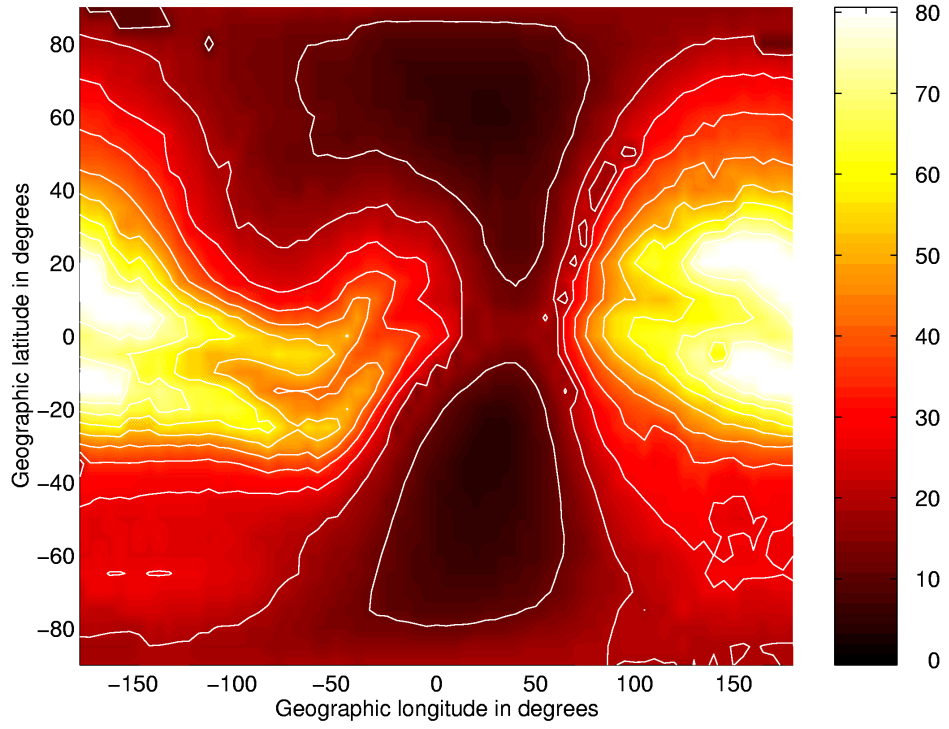
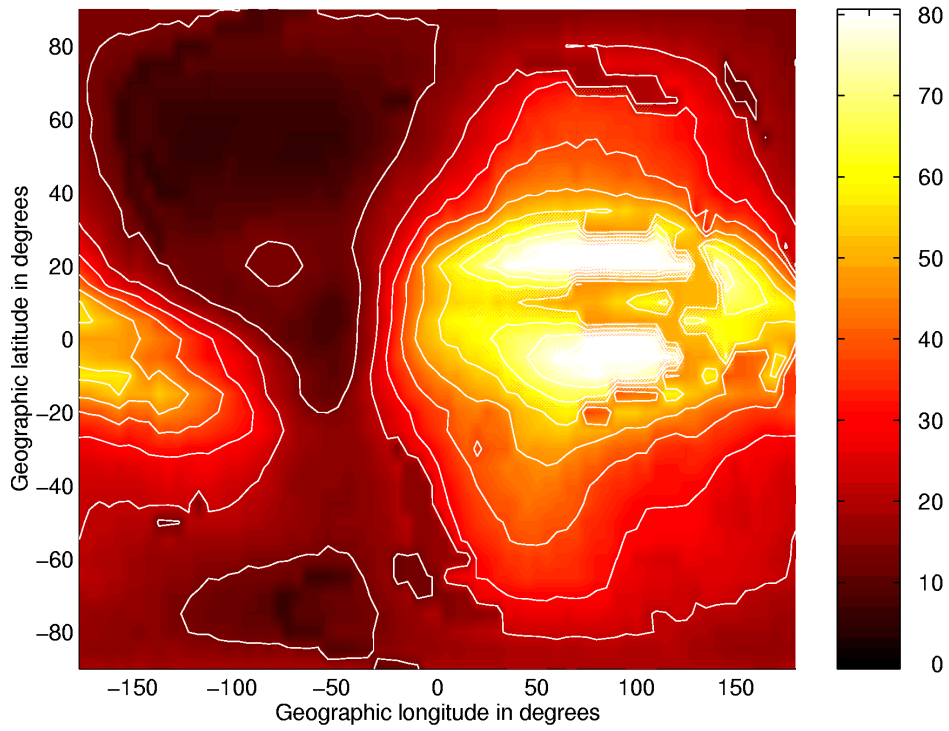


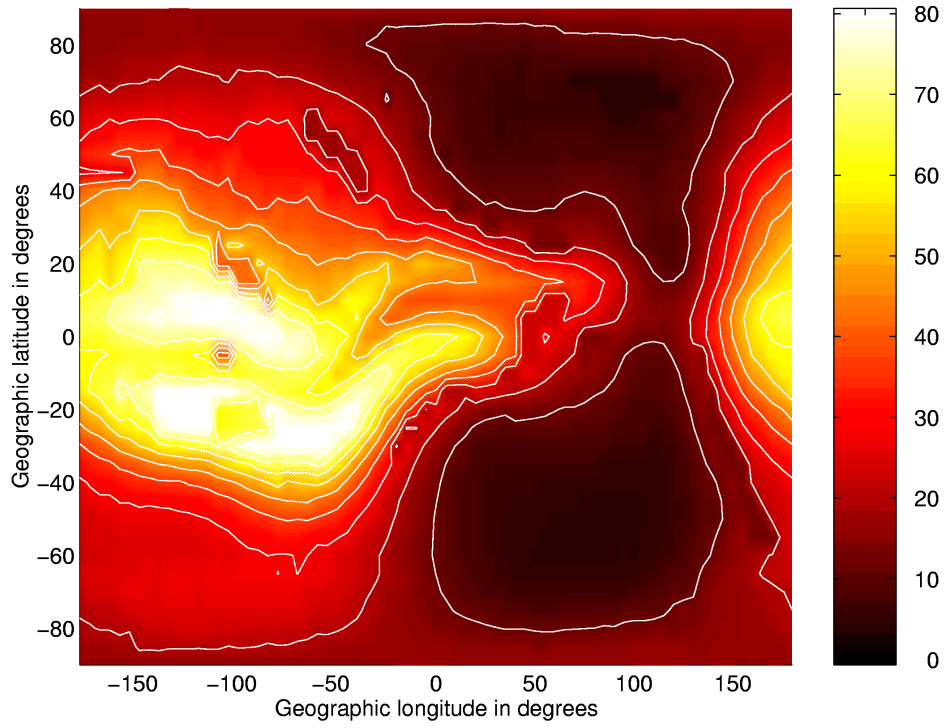
Global TEC Map in TECU for UT=02:00 of 13 March 1993 Using 33 IGS Stations



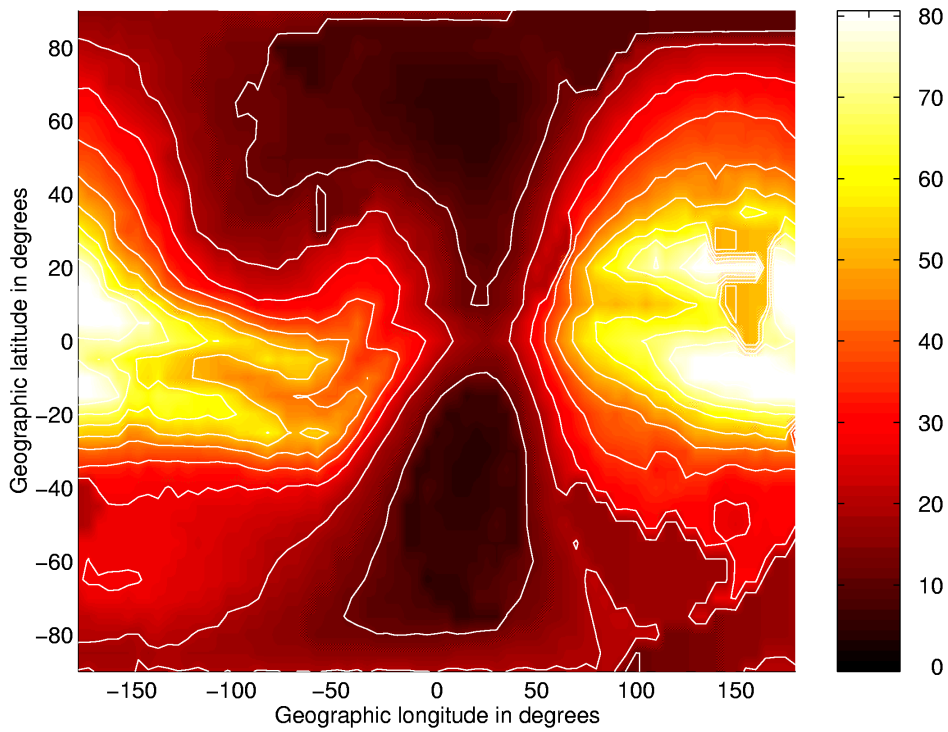
Global TEC Map in TECU for UT=08:00 of 13 March 1993 Using 33 IGS Stations



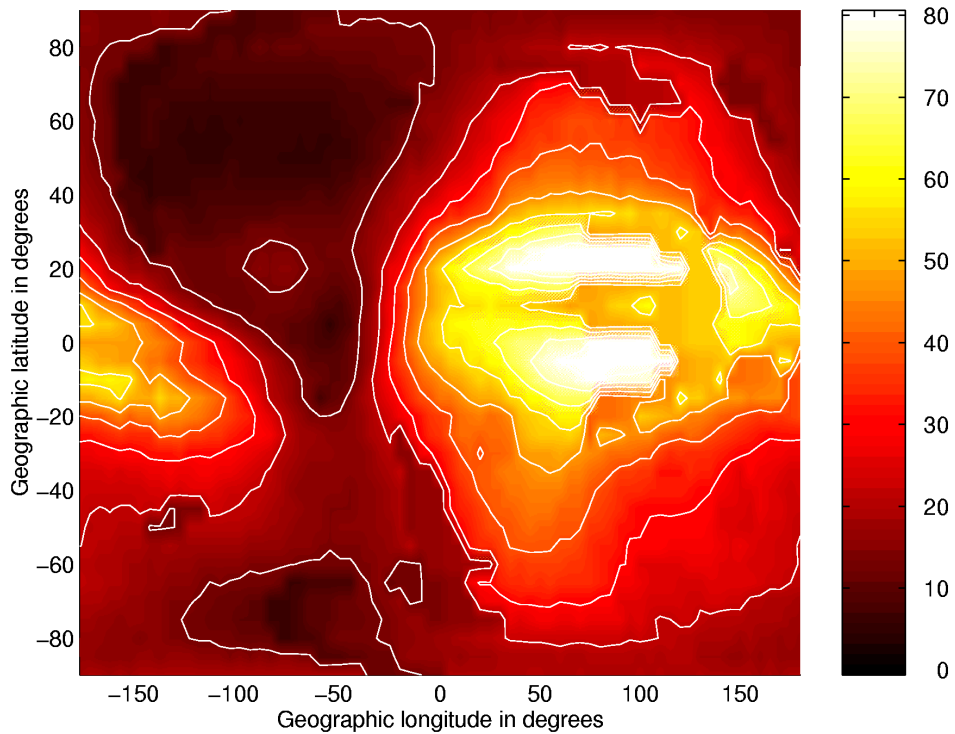
Global TEC Map in TECU for UT=21:00 of 13 March 1993 Using 33 IGS Stations



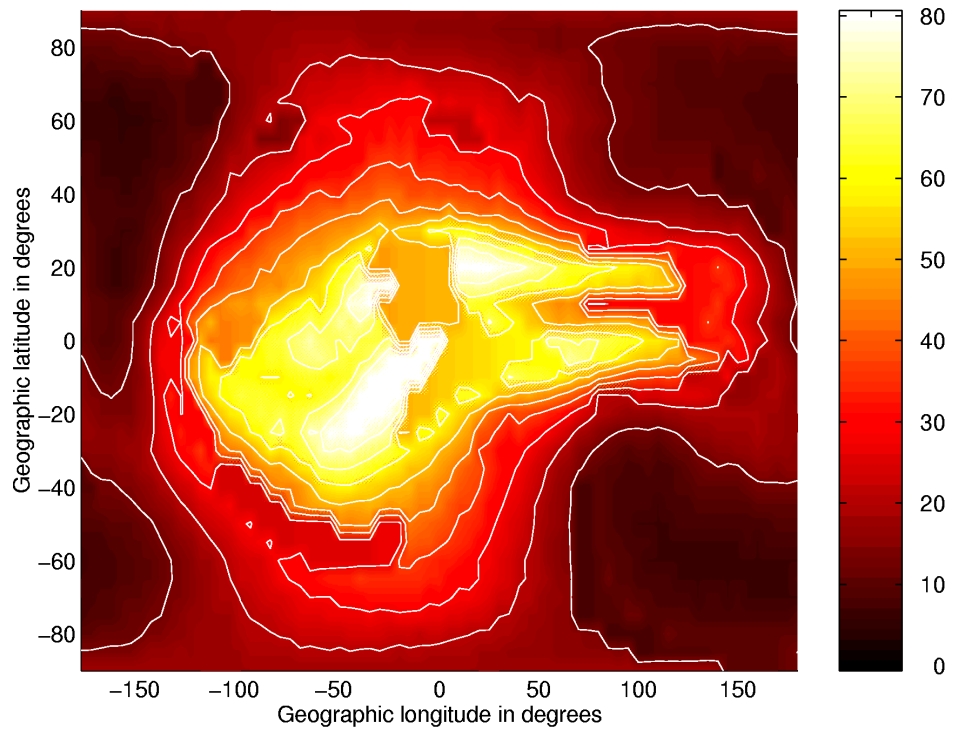
Global TEC Map in TECU for UT=03:00 of 14 March 1993 Using 33 IGS Stations



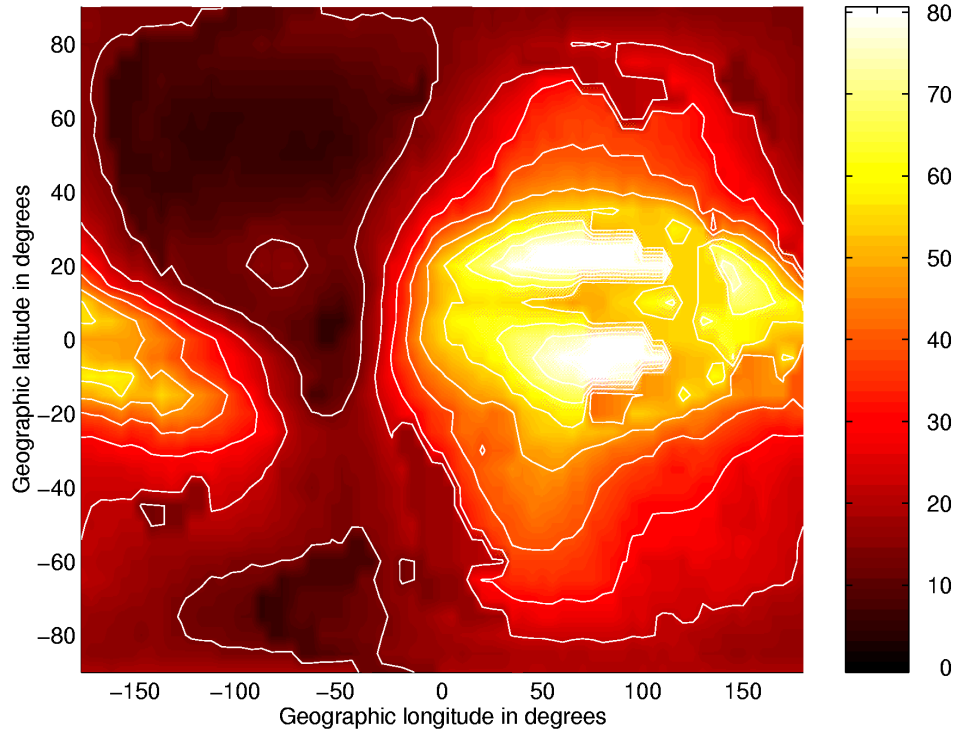
Global TEC Map in TECU for UT=08:00 of 14 March 1993 Using 33 IGS Stations



Global TEC Map in TECU for UT=15:00 of 14 March 1993 Using 33 IGS Stations



Global TEC Map in TECU for UT=08:00 of 15 March 1993 Using 33 IGS Stations



Global TEC Map in TECU for UT=13:00 of 15 March 1993 Using 33 IGS Stations

